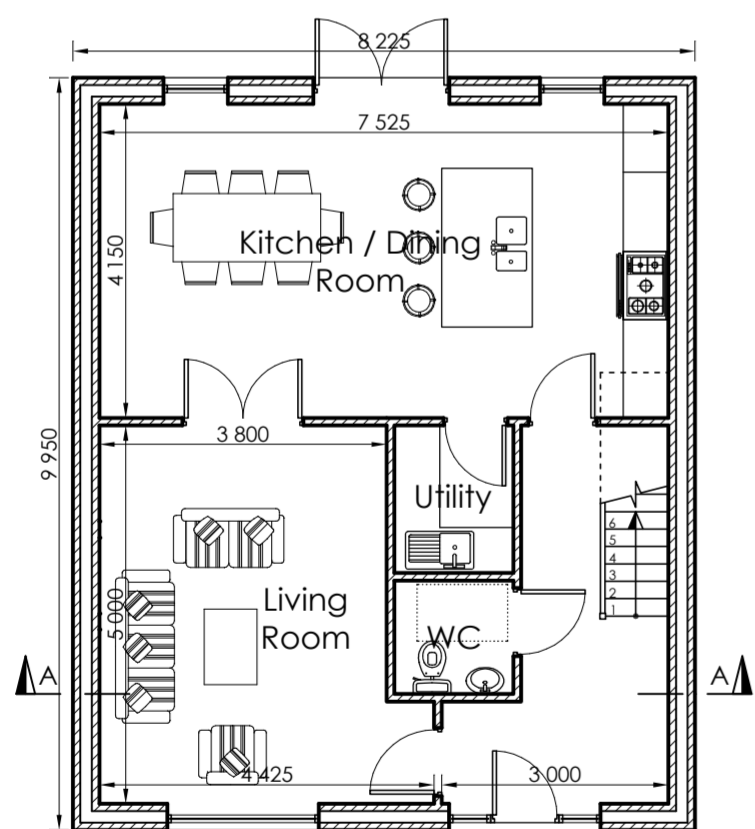


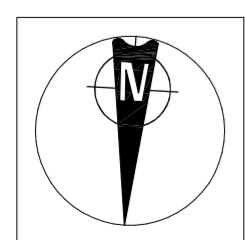
First Floor Plan

Scale 1:100

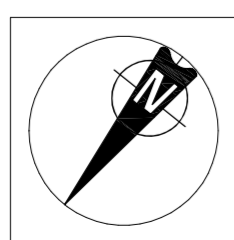


Ground Floor Plan

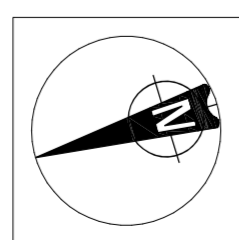
Scale 1:100



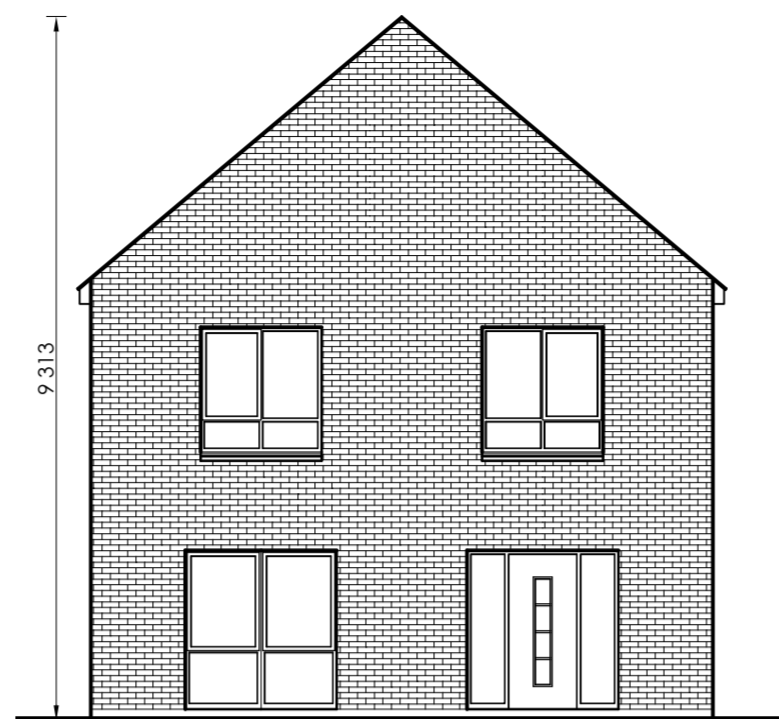
House No.:
2-12



House No.:
13



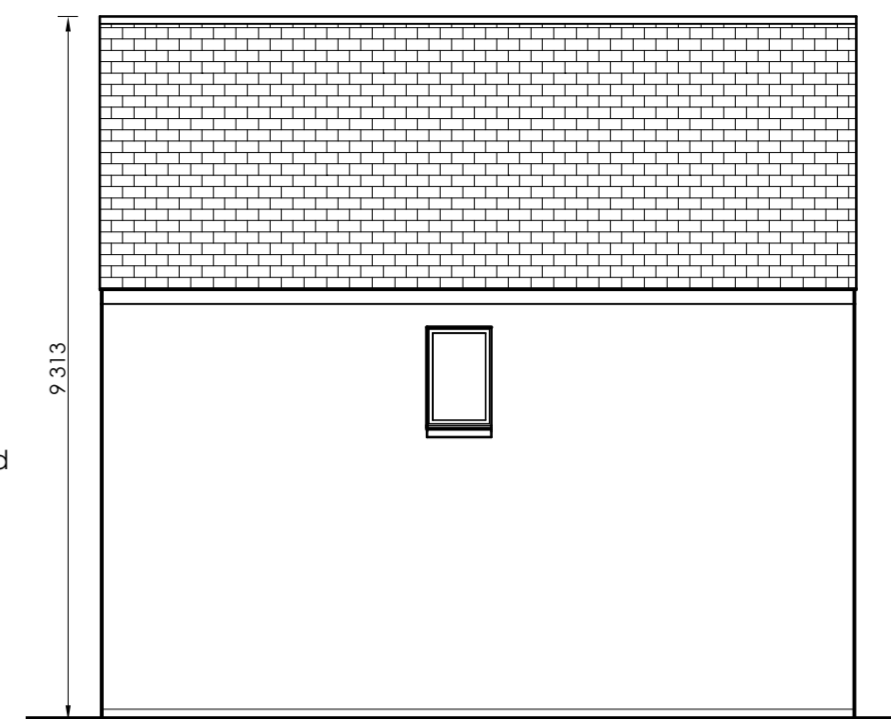
House No.:
14



Front Elevation

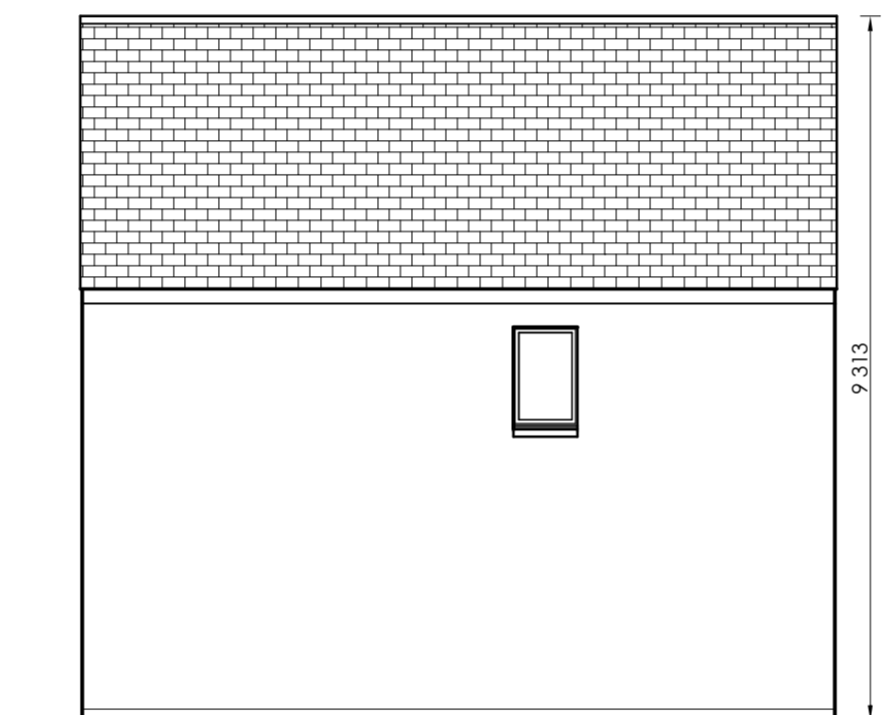
Scale 1:100

- Selected slate/tile to roof
- PVC fascia, soffit & guttering in selected colour
- Double/triple glazed PVC windows in selected colour
- Selected brick where indicated
- Selected plaster finish
- Smooth plaster plinth



Side Elevation

Scale 1:100



Side Elevation

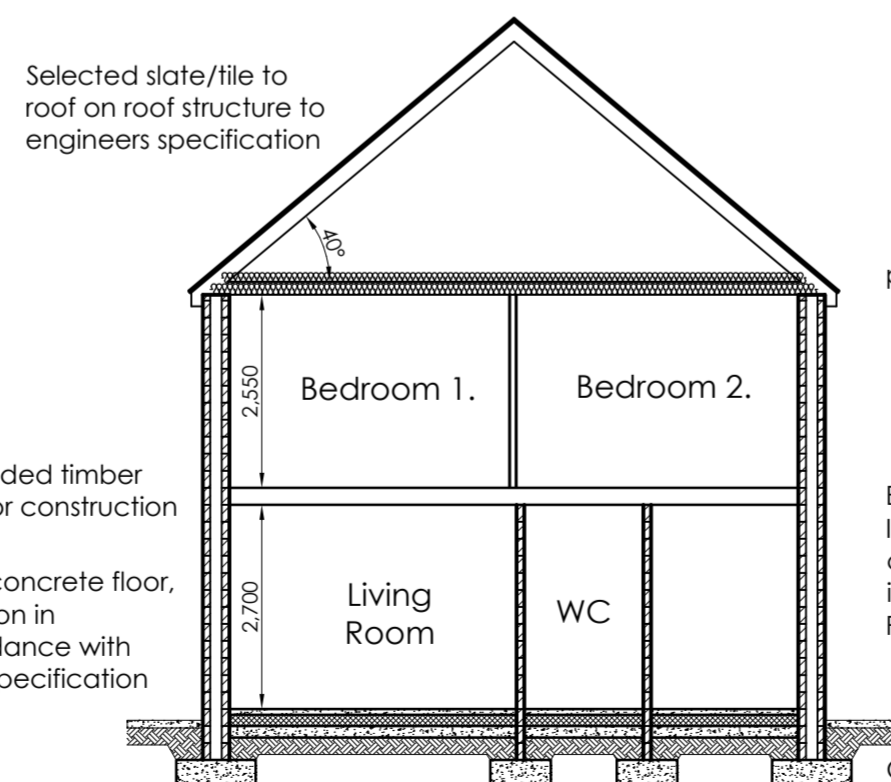
Scale 1:100

- Selected slate/tile to roof
- PVC fascia, soffit & guttering in selected colour
- Double/triple glazed PVC windows in selected colour
- Selected plaster finish
- Smooth plaster plinth



Rear Elevation

Scale 1:100






Section A-A

Scale 1:100

- Selected slate/tile to roof on roof structure to engineers specification
- Suspended timber first floor construction
- In-situ concrete floor, insulation in accordance with Part L specification
- Concrete foundations in accordance with engineers specification
- External wall to be insulated cavity construction, insulation in accordance with Part L specification
- p.v.c. fascia, soffit & guttering

13 no. 4 bed, detached, Type 'A' [139.2m²]

Revision	Description	Date
 GLEESON MCSWEENEY		
Project	Proposed residential development at Ballykeeffe, Raheen, Limerick. For: DW Raheen Developments Ltd.	Stage Planning
Title	4 Bed Detached Type A	
Scale	1:100 @ A2	Date December 2021
Drawn	M.M.	Rev 1704-10-110
99 O'Connell St., Limerick		
 061 412277  info@gleesonmcsweeney.ie		

ARCHITECTS